



Adventure School

Longitude Place, Whitby,  
PORIRUA 5024  
Tel: 04 234-7220,  
[office@adventure.school.nz](mailto:office@adventure.school.nz)  
[www.adventure.school.nz](http://www.adventure.school.nz)

## Newsletter No 14 – 30 September 2021

Our children will discover who they can be

### THE ADVENTURE WAY

We learn ... We care... We act...

Curious

Creative

Collaborative

Self-directed

Self-aware



Welcome to our new students. It's great to have you join our Adventure family!

**Room 8:** Samuel Allock

**Room 1:** Skye Ashby

### From our Principal



Kia ora koutou e te whānau

Whakataka te hau ki te uru,  
Whakataka te hau ki te tonga.  
Kia mākinakina ki uta,  
Kia mātaratara ki tai.  
E hī ake ana te atākura  
He tio, he huka, he hauhu  
Tihei mauri ora

We come to the end of term three, a term punctuated by the on-going impact of global pestilence and a term where our community has mobilised - yet again - and shown its mettle. Trying to sustain the natural flow of your lives and having to engage your children in distance learning during home detention is huge. Our tamariki returned to school happy, energised and ready to embrace school life. We have had a really enjoyable last three weeks and the nature, attitude and enthusiasm of our children reflects directly on the loving caring homes they come from.

Obviously we will face our current, irritating restrictions until the end of term but freedom looms and I am hopeful this will be manifest in a return to Level One by the start of next term.

Term four is by its very nature the busiest term of the year and it's a shorter term this year, comprising only nine weeks. This leaves us one less week to sustain our social and academic learning, enjoy the traditional fun, festive pre-Christmas activities and generally do all the rounding off 2021 stuff and the preparatory 2022 stuff.

### **Whitby New World**

It was great to meet Kirk Mander, the manager of Whitby New World last week.

Kirk is very community focused and is supporting all of our local schools by offering financial support to fundraising projects.

Kirk has kindly offered \$1000 for us to use at Whitby New World in support of activities that benefit or help us to resource our school.

Many Thanks Kirk



### **Mana Medical Centre**

Kia Ora

School holidays are fast approaching, and this is the ideal time for all whanau aged 12 years + to get their free COVID vaccinations (1<sup>st</sup> or 2<sup>nd</sup> dose). We have opened up more appointments to accommodate a booking.

Our vaccination clinic at Paremata-Plimmerton Rugby Club on Pascoe Ave, Ngatitoa Domain, Paremata is open Tuesday – Thursday every week.

Please visit [www.bookmyvaccine.nz](http://www.bookmyvaccine.nz) or phone 0800 28 29 26 to:

- Make a booking
- Change an existing booking or
- Check our clinic opening hours

We also have the capacity and are happy to take “walk-ins” each day.

All experts agree that 2 doses are required for the best protection against COVID19, and a minimum of 21 days is required between doses.

Our friendly team is looking forward to seeing you!

Kia tūtaki

*Whakahari*

*Nō reira, tēnā koutou, tēnā koutou, tēnā koutou katoa.*

**John Wootton**  
**(Principal)**

## 2022 Enrolments

We will soon be starting to plan for 2022 classes. To assist with this, we would greatly appreciate you letting the office know, as soon as possible, if you have a child who -

- ➡ turns five during 2022 and you have not already given pre-enrolment details to the office
- ➡ is currently in Years 0-7 and **will not be returning** to Adventure in 2022.

## Subway Lunches – New Menu from Term 4

**SUBWAY**  
195 Main Road, Tawa - Phone 04 232 2282

Cookies are not part of the standard School Lunch Programme Menu and may not meet local or regional nutrition criteria. These have been made available for you to choose at the special request of your school. Check with your school for their school lunch nutrition criteria.

**ALL MEALS INCLUDE A COOKIE**

**Size? (Pick 1)**  
☐ 4 inch \$6.00  
☐ 6 inch \$7.00  
☐ 12 inch \$10.00

**Bread? (Pick 1)**  
☐ White  
☐ Wheat

**Meat? (Pick 1 or see below)**  
☐ Ham  
☐ Beef  
☐ Turkey  
☐ Vegetarian

**Premium Meat**  
☐ Chicken Strips **Add \$2.00**

**Salads?**  
☐ Cheese  
☐ Lettuce  
☐ Tomato  
☐ Cucumber

**Sauces?**  
☐ Mayonnaise  
☐ Honey Mustard  
☐ Barbeque  
☐ NO Sauce

**Subway USE ONLY:**  
**Change Enclosed \$**

☐ Extra Cookie: **Add \$1.00**  
☐ 400ml Pump: **Add \$2.50**

## In the Spotlight

# Congratulations...

**Mileah Francis** (Year 6)

Titahi Bay Horticultural Society  
Primary – 9-12 Years

**2<sup>nd</sup> place**

*"Spring is in the air!!! - This is my creation of Spring! I used the flowers that we had at home and using rosemary from my mum's herb garden, lavender, daffodil petals, fuchsia flowers and white flowers from our potato vines.*



**A beautiful  
creation  
Mileah!**





# Kowhai shed build

## Kowhai shed build



A big thank you to Charlie (Mrs St-Clair's husband) and Darryn, (Ms Burn's partner) for assembling the shed base last weekend.

It has taken over two terms to achieve but ...finally we have our second Kowhai shed built and ready to store our outside Learning Through Play equipment.



A huge thank you to Mathew Degerholm, Richard Robinson, Selwyn Harrauld, Anthony Dowd, Ross Kerry and Mark Connor for spending a large part of their Sunday constructing the shed. They did a magnificent job and we are truly grateful for their time and building expertise.

Another big thank you to the Year 1 teachers for their support either on the day or in supplying morning tea to our hard-working Dad's.



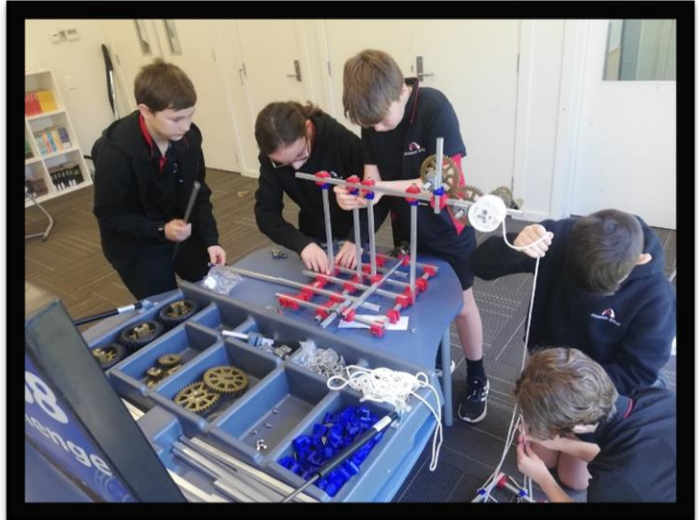
# Totara Tech Challenge

Totara students have been developing their engineering skills over the last few weeks of Term 3. The whole syndicate competed in a tower building competition in Week 9. Each group of 4 students were given 20 pieces of paper, some string and a small roll of sellotape. Their group goal was to build a tower that would support the weight of a school dictionary. The group was judged on aspects design, creativity, teamwork and the height of the tower.





The top four teams were then picked to go onto the next round of the competition where they used a variety of materials to build a device that would lift a ball onto a table.



Congratulations to the members of the top two teams – Ashleigh Neal, Emma Bruwer, Lexi Knox, Chloe Waitai, Eilidh Davidson, Bonita Huang, Daniella Starr and Zoe Grant-Fargie. They will now go on to compete in the ePro8 interschool competition in November.





## Pre-loved Goods



Do you have toys, books, games, cuddly bears or dolls cluttering up your home?  
If you do, we may be able to take them off your hands.

Totara Syndicate is hoping to host a **Stall Day** in **Week 4** of next term, Covid restrictions permitting. Proceeds from Stall Day will be used to offset some of the costs of Senior Camp next year.

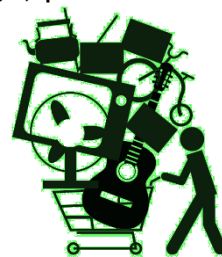
In the past, one of our more popular stalls at Stall Day has been Pre-loved Goods. We are presently looking for donations of child friendly items that are in good working order (no jigsaws with pieces missing), age appropriate (no old Rambo DVDs) and clean. No clothes please, although we do have a use for dress up costumes, fairy wings and frilly tutus.

So, if you are looking to have a bit of a clean out or tidy up over the holidays, please bear us in mind.

Senior students will be standing at the main and bottom gates at 8.30am every morning from the start of next term to collect any items you or your child brings to school.

Thanks in advance for your support.

Totara Syndicate



## Adventure's Got Talent is Back!

All acts to be no longer 3 minutes and can be made up of individuals or groups.



Do you have a talent? We want to see it!



Acts will be judge on originality, preparedness, creativity and stage presence.



All Finalists will compete in the Finale, Week 5 of Term 4.





## Important Dates for Your Calendar

*Please be aware some details may change*



### TERM THREE

<b>Week 10</b>	Friday 1 October	Final day of Term 3
----------------	------------------	---------------------

### TERM FOUR

<b>Week 1</b>	Monday 18 October	First day of Term 4
	Friday 22 October	Parumoana Swimming Sports (Yrs 5-8)
<b>Week 2</b>	<b>Monday 25 October</b>	<b>Labour Day - SCHOOL CLOSED</b>
	Friday 29 October	School Disco (tbc)
<b>Week 3</b>	Monday 1 November	6.30: BOT Meeting
	Tuesday 2 November	7.30: PTNi Meeting
	Friday 5 November	Senior Athletics (Yrs 5-8)
<b>Week 4</b>	Monday 8 November	Adventure's Got Talent (tbc)
	Tuesday 9 November	Senior Athletics (Yrs 5-8) postponement
	Wednesday 10 November	Totara Stall Day (tbc)
	Thursday 11 November	Nikau EOTC: Queen Elizabeth Park (tbc) pp
<b>Week 5</b>	Tuesday 16 November	Parumoana Athletics
	<b>Friday 19 November</b>	<b>Teacher Only Day - SCHOOL CLOSED</b>
<b>Week 6</b>	<b>Monday 22 November</b>	<b>Teacher Only Day - SCHOOL CLOSED</b>
	Thursday 26 November	Nikau EOTC: Queen Elizabeth Park (tbc)
	Friday 26 November	Sausage Sizzle
<b>Week 7</b>	Mon-Fri	Totara EOTC Week
	Monday 29 November	Kowhai Kindy Gift-Making (tbc)
	Tuesday 30 November	Kowhai EOTC: Maidstone Max/ Skating
	Friday 3 December	Kowhai Tree Trimming
<b>Week 8</b>	Tuesday 7 December	Kindy Concert
	Friday 10 December	1.45: Prizegiving
<b>Week 9</b>	Monday 13 December	Kowhai Christmas Carols Kowhai Year 2 Graduation Nikau Fun Day (Adventure Park)
	Tuesday 14 December	Year 7 & 8 immunisations Year 8 Leaver's Dinner
	Wednesday 15 December	Reports sent home
	Thursday 16 December	Final Day of School 11.00: Final Assembly 12.00: School finishes for 2021

### 2021 Term Dates

**Term Three:** Monday 26 July - Friday 1 October

**Term Four:** Monday 18 October to Thursday 16 December

School will be closed on the following days:

**Labour Day:** Monday 25 October

**Teacher Only Days:** Friday 19 November & Monday 22 November (Term 4)



## COMMUNITY NOTICES

### Spotlight Performing Arts

Does your child like to sing, dance, act and perform?

Would you like your child to build more confidence and make more friends?

Performing arts classes led by a London West End performer!

After school and weekend classes in Aotea, Johnsonville, Karori and Lower Hutt.

Limited spaces so book your place now!

[www.spotlightperformingarts.co.nz](http://www.spotlightperformingarts.co.nz)

### Cricket's Back and Junior Club Registrations are open for the 2021 – 2022 season!

Club registrations are open from 1 September until 30 September 2021.

Local cricket clubs offer a range of opportunities to play cricket this summer for participants aged 4 to 12.

The Superstar Cricket Programme is available for participants aged 4 to 7, with Junior Club Cricket available from Year 2 to 8 in dual-pitch, softball, and hardball formats.

New to cricket? No worries! You can find your local club by clicking on the link [here](#) or reach out to Cricket

Wellington on [community@cricketwellington.co.nz](mailto:community@cricketwellington.co.nz)

We look forward to seeing you on the park this year!

***Children LOVE learning how to Cartwheel, Handstand, Round-off, Handspring and Flip at BIGAIR GYM!*** BIGAIR's GYMNASTICS, TRAMPOLINE, CHEERLEADING, TUMBLING & FREE RUNNING classes are excellent for fun and fitness! We focus on safety, technique, fundamental skills, right through to more advanced skills, such as summersaults and twisting flips. Bigair Gym is a pristine, exciting, kid friendly gym! Our skilled and experienced coaches run structured and organized stimulating gym classes, that follows a badge programme which creates goals and allows children to plan for success!

**Book now for Bigair's October School Holiday Programme!** Full day and half day sessions available. This is a wonderful opportunity for kids to keep active and to learn something new during the holidays! **BOOK NOW for Term 4 Classes.** Spots are limited so book now on [www.bigairgym.co.nz](http://www.bigairgym.co.nz)

**Bigair Gym Tawa** ph. 04 232 3508 e. [office@bigairgym.co.nz](mailto:office@bigairgym.co.nz) @. 10 Surrey Street, Tawa.

### TENNIS AT NGATITOA

Starting Monday 18<sup>th</sup> October

4-5pm for Under 10's, 5-6pm for Over 10's

at Ngati Toa Domain Tennis Courts

Come and give it a try before signing up.

EMAIL: [juniors@ngatitoatennis.org.nz](mailto:juniors@ngatitoatennis.org.nz)

<http://www.ngatitoatennis.org.nz/>

### Primary Summer Hockey Programme.

We have an exciting summer programme designed for children from years 1 – 6 to get the most fun out of their hockey experiences. The programme will offer both training and 6-a-side games for primary children over a 6-week programme. They will be working with some of the best coaches Wellington has to offer in an engaging and supportive environment.

We have programmes available across the Wellington region in Berhampore, Karori, Porirua, Lower Hutt and Upper Hutt.

More information and registrations for our Primary Summer Hockey programme can be found [here](#).

## SCHOOL HOLIDAY ACTIVITIES

### Circus School Holiday Programme!

The Circus Hub in Wellington offer circus classes that are fun, exciting and challenging. Skills taught include aerial silks, trapeze, acrobatics, juggling and more! A great activity to develop coordination, perseverance, creativity and confidence. For ages 5-15 years. We also run classes for all ages preschool to adults.

Bookings essential, book online today at [www.circus.org.nz](http://www.circus.org.nz)

## **Spring Holiday Programme @ Adventure School, 4 – 15 October 2021**

BOOKINGS ARE OPEN! 2 weeks of popular and exciting activities await your child

(e.g. Trip to Staglands, Trampoline Park, Minion Theme, Laserforce, Roller Skating Rink, Garden Craft, Movies @ Lighthouse Cinema and much more). We follow strict Covid19 Health & Safety guidelines indoors and offsite.

BOOK ONLINE: [www.asfc.co.nz](http://www.asfc.co.nz) or for more information e-mail

[holprog@asfc.co.nz](mailto:holprog@asfc.co.nz) or call 027-454-6975. Our opening times are 7.30am – 5.00 / 5.30pm. We are approved for Oscar subsidies! Children from all schools are welcome.



Holiday Programme @ Adventure School

### **GKR Karate**

Classes are back and running during school holidays, keep the kids active of the house and attend a Free Trial Class. Kids 5 years up to adults.

To book and for more information, contact Sensei Anthony on [0277653935](tel:0277653935).

### **PORIRUA LITTLE THEATRE PRODUCTION OF “PETER PAN JR”**

A Musical based on the play by Sir J M Barrie

8-16 October, Mana College Hall

<http://www.iticket.co.nz/events/2021/oct/peter-pan-jr>

### **Looking for something to do these school holidays?**

Wellington North Badminton is hosting a multi-day holiday programme where we not only teach you how to play badminton, but also the rapidly growing sport of pickleball. The focus will be on having fun and learning new skills such as balance, footwork, hitting (shuttles and balls), hand eye co-ordination and teamwork.

Sign up with your friends, so you can play together, its great fun.

Come on down during the second week of the school holidays on the 11th, 13th and 15th of October from 9-midday. \$30 a day or \$75 for all 3 days.

Sign up at: <https://bookings.wnba.org.nz/public/event/614a9534c7b7c057d020b695/shuttle-time-holiday-programme>

Registration closes Friday, 8 October 2021

### **The Great New Zealand Reading Road Trip**

The full programme can be found here: <https://porirualibrary.org.nz/whats-on/school-holiday-programme/>

All events will be delivered at the Children's Chat Group page via Porirua Library's facebook

page: <https://www.facebook.com/groups/PoriruaLibraryChildrensChat>, as we are unable to accommodate groups in the library at Covid-19 Level 2. Now would be a great time to join that group if you have not yet.

You can collect a supplementary activity book from all Porirua Libraries branches once the holidays start, and the videos we post will inspire you to work with the templates within that. If you are unable to make it in, drop me a line, and I'll send you a PDF to print at home.

We would love to see you photographing and filming your home adventures with us, and posting them to the Children's Chat page.

*Bee Trudgeon,*

*Children's Librarian*

[bee.trudgeon@porirua.govt.nz](mailto:bee.trudgeon@porirua.govt.nz)

### **Nga Manu Nature Reserve**

Spring is a glorious time to visit Ngā Manu, birds are nesting, and the wetland and forest are abuzz with new life.

See below for information on our school holiday programme

Link to our website information: <https://ngamanu.org.nz/upcoming-events/october-school-holidays/>

### **Staglands Wild Trail Challenge is back!**

Kids can take on The Challenge these October School Holidays and get a Free Kids' Meal from The Staglands Café. They simply have to download the Challenge Sheet from our website, print it and take it to Staglands where they can have heaps of fun with their friends and whanau whilst they learn about some of our wonderful wildlife.

...and once they complete The Challenge, they can claim their free kids' meal on us!

<https://www.staglands.co.nz/>