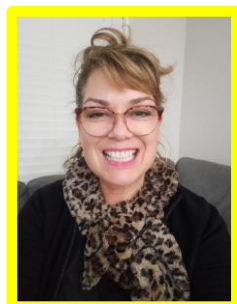


Year 0/1 Team Newsletter - Term Three, 2022



Dear Parents and Caregivers,

It is hard to believe that we are already half way through the year. This term we welcome Mrs Di Henzell, who is joining our Year 0/1 Team. Di is starting our roll growth class in Room 10 and teaches Monday to Thursday. Georgia Vaughan will be teaching Room 10 on Fridays. Vanessa Clark will continue to cover any absences and scheduled teacher release in all Year 0/1 classes.



Mrs Henzell
Room 10 teacher



Mrs Georgia
Release teacher



Mrs Clark
Release teacher

This year we have had an earlier release time at the end of the day but from Term 3 we will revert to releasing children **from 3.00pm** at their classroom door.

Just a reminder to return the small card for Mr Wootton's farewell. If you want your child's contribution included in John's farewell card, it needs to be returned to your child's teacher **before Friday 29th July**. For a replacement of a lost or damaged card, please see your child's teacher. Please note, this does not apply to Term 3 New Entrants.

In Week 5 of this term, Adventure School is holding Learning Conversations. This will be an opportunity for us to tell you about your child's progress and achievement and for you to share your Adventure Way aspirations for your child. If your child is new to school, it is likely they will be having a School Entry Interview instead of a Learning Conversation. The teacher will email you to organise a suitable time. Please see the table below to determine if you will be having a Learning Conversation or a School Entry Interview. If unsure, please get in touch with your child's teacher.

REPORTING SCHEDULE FOR YEAR 0 AND 1

When Your Child Started:	Reporting in:		
	Terms 1 and 2	Term 3	Term 4
2021	Learning Conversation	Learning Conversation	Written Report
Term 1, 2022	School Entry Interview within 8 weeks of starting school	Learning Conversation	Written Report
Term 2, 2022	School Entry Interview within 8 weeks of starting school	School Entry Interview (if your child did not have one in Term 2) or Learning Conversation (if your child had an SEI in Term 2)	Written Report
Term 3, 2022	n/a	School Entry Interview	Written Report

Adventure Way Through Play - Term 2, 2022

Each day in Kowhai, children grow the Adventure Way attributes through play. Children are coached by their teachers to develop curiosity, creativity, collaboration, self-awareness and self-direction. During Term 2, our main focus was collaboration and we coached children to:

Cooperate by-

- sharing & taking turns
- recognising how their words & actions impact on their peers
- knowing how to join a group

Work with others towards a common goal by-

- showing respect for other people's ideas
- contributing their own ideas
- negotiating and compromising
- being able to work with a group to take an idea from concept to completion



Here are some photos of the Year 0/1 students developing Collaboration in the play during Term 2, 2022. Our Term 3 Adventure Way focus is Curiosity and Creativity.





New Zealand Curriculum Level One links within these photos include: English, The Arts, Technology and Health and Physical Education.



English: Listening, Reading and Viewing: Recognise and identify ideas within and across texts.



Visual Art: Explore a variety of materials and tools and discover elements and selected principles.



Technological Practice: Outline a general plan to support the development of an outcome, identifying appropriate steps and resources.



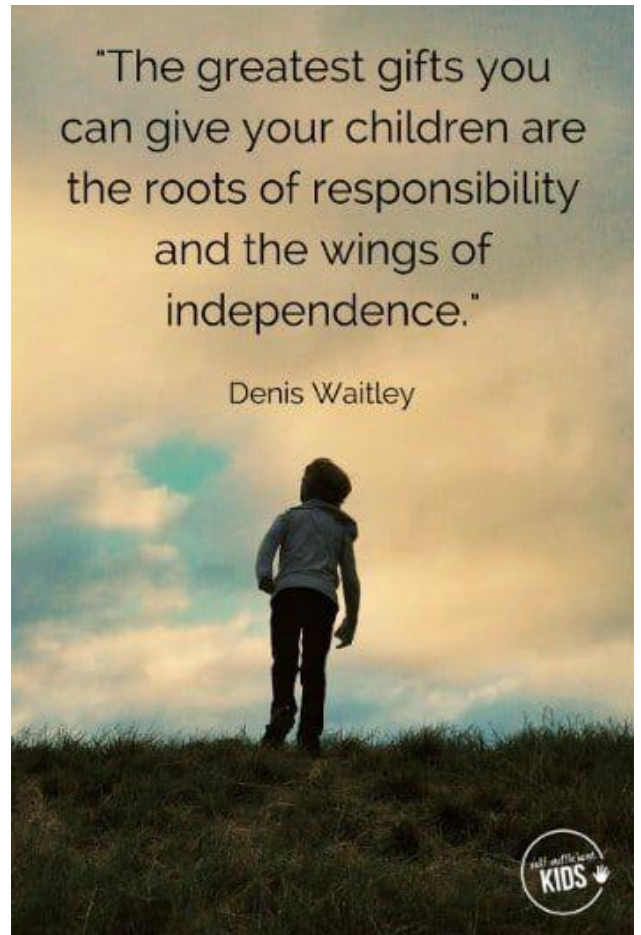
Movement skills/Science and Technology: Develop a wide range of movement skills, using a variety of equipment and play environments.

Encouraging Independence

This term is the perfect term to promote independence in tamariki. We are halfway through the year and for many of the children, this means they will be Year 2 students in just 2 terms.

Here are some of the ways we can support your children to grow independence at school:

- **School Bag:** Encourage your child to carry their school bag and to put it on their bag hook by themselves.
- **Make a child friendly lunch box:** Slightly open any packaging for them so that they are not having to rely on an adult to open it for them. We especially encourage the opening of yoghurt/squirties pouches - simply open and reclose it before putting it into their lunch box in the morning.
- **Lace Up Shoes:** If your child has lace up shoes - ensure they can successfully tie them themselves before sending them to school.
- **Bag Items:** If you have time in the mornings, encourage your child to put their items away in the right place so that they can be easily found for later; book bag, library book, poem book, rain jacket.
- **Hang back and observe, rather than intervening:** Give them time and space to struggle through challenges - yes, it might take them what seems to us like a lifetime (real time = 2 minutes) to put their shoes on, but as they practise these skills they will get faster and build independence.



It is not what you do for your children, but what you have taught them to do for themselves, that will make them successful human beings.
~ Ann Landers



Turning 4?

Turning 5?

Is your child turning 5 in the not so distant future?
If yes, please come in or call the office to let us know as soon as possible and secure your child's classroom placement.

We are constantly forward planning student placements and knowing about future enrolments is crucial.

We accept enrolments from 4 years old
so please, as soon as your child turns 4,
let the school office know.



We Need Your Help...

Thank you so much for your donations of 'beauty salon' products. We set this up in Term 2 and it has been incredibly popular. We have loved observing the children demonstrating and developing a range of Adventure Way attributes while playing in this area. In role play, learners take on the roles of other people and express their understanding of real-world situations in a hands-on way. Children learn from each others' experiences and teachers can build on their understanding by gifting knowledge. Role play is the highest level of play and an opportunity for children to be creative and use their imaginations as they explore and make sense of the world around them.

Children's confidence and communication skills are developed as well as their ability to work in a team. Role playing requires collaboration as children negotiate roles and develop their storyline. It fosters storytelling skills that will later be applied to their creation of written texts.

Our next project is to establish a vet/animal care area, so if you have any old dog leads, collars, cat carriers, cat feeding bowls, anything at all which you think would be appropriate, please send it along.



Odds and Ends:

In our learning through play we have lots of children who like to create and make with boxes, tubes and containers etc. We have a wheelie bin that we like to keep stocked with with these items. Can you please start sending in your empty (clean) boxes, containers and bottles? We are after things like...

- Cereal boxes
- Rolls (however no toilet paper rolls due to health and safety)
- Tissue boxes
- Muesli bar boxes
- Margarine containers
- Dishwashing liquid bottles
- Spray bottles (empty and clean) - fantastic for water play!
- Small plastic bottles with lids
- Laundry powder scoops

We are also requiring donations of scrap paper. We are wondering if there is anyone who regularly recycles paper from their office that we could have instead? If yes, please bring it in!

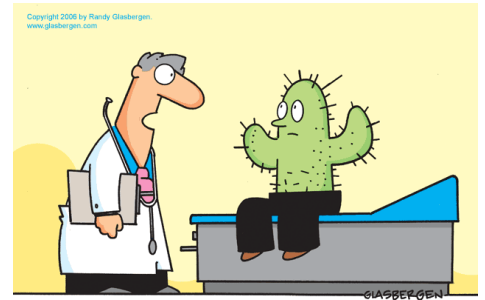
Parent Helpers:

Last term Diane Pepperell trained up three parent helpers and they have already started supporting children for literacy. We would love to have additional parents, so if you are interested or have one morning free a week please get in touch with Rebecca. rstclair@adventure.school.nz

Reminders...

- Shared Consumables:

Items such as pencils, rulers, student whiteboard pens, erasers, craft materials, hot glue sticks and glue sticks are part of your child's shared consumable donation. This donation is \$10 per term and in order for classes to remain fully stocked with everyday items, we ask that this is paid promptly. Do talk to the office about payment options.



"How many times must I remind you? Eight glasses a day!"

- What's in a Name?

Every term the mountain of lost property grows larger and larger. Now is a really good time to check that your children's clothing, drink bottle and lunch box are still named clearly.

- Spare Clothing:

It is really helpful for children to have a spare change of clothes in their bag just in case. Though we are moving into the colder months of the year, we will often take part in messy or water play.

- School Spares:

If you have any size 4-6 clothing at home which your child has grown out of that you would be happy to donate, we would absolutely love to have it for our spare clothing box. We are particularly in need of size 4-6 shorts and long pants. We are also in need of girls' socks and underwear.

- Food at School:

Towards the end of Term 2 we discovered that children thought it was a brilliant idea to share lunch box food, which we heavily discouraged. We ask that whānau please chat at home about why we don't share our lunch box food; ie. allergies, whānau put a lot of effort into making a great lunch especially for their child, germs. These are some of the reasons we give at school.

Kind regards,

Di Henzell, Rebecca St. Clair, Nadine Amorangi and Tania Bailey.

