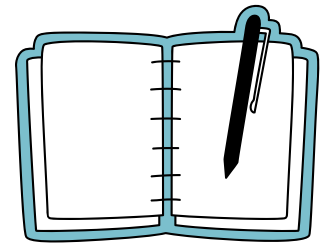


NĪKAU HOME LEARNING



Weekly Homework

Each week, a named folder will come home containing maths and spelling worksheets, as well as a reading log.

This home learning is optional and will not be marked by a teacher. Answer sheets will be displayed in classrooms so students can check their own work if they wish.

Spelling and Maths

For both the spelling and maths tasks, there will be two different levels or versions of the same activity. Students can choose to complete one or both, depending on how much practice they would like.

Reading

Ideally, students should aim to read for 15–20 minutes each day. This could include:

- Reading independently
- Reading to someone at home
- Listening to someone read to them

Students can also complete a weekly reading log, which will stay in their folder.

Homework Completion

Please ensure Home Learning folders are returned to school **every Friday** so teachers can check engagement and provide new learning for the following week.